

Let's build quality in your home with us



**Waajib Daam
Par Badhiya
Quality**

VISION

Our Vision is to be among the leaders in construction chemical industry by delivering 100% high quality products.

MISSION

Our mission is to provide complete solution for construction industry.

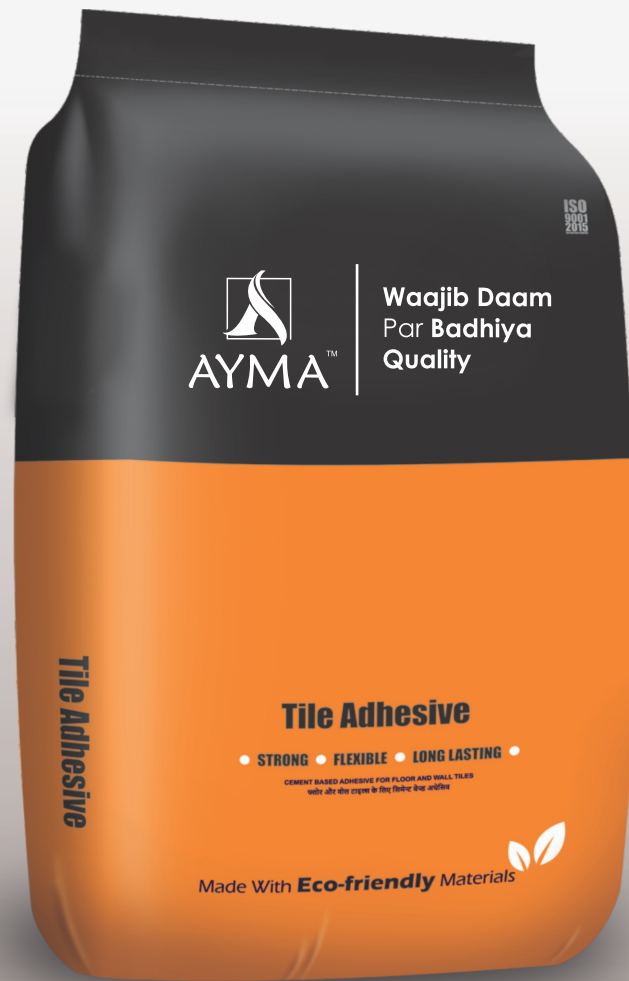
Company Profile

SOSO Chemical is a leading manufacturer of construction chemicals. Brand SOSO Chemical has become a synonym for ability Stability and Durability in the construction Industry. Operating from its head quarters is Morbi, SOSO Chemical has been serving the industries with its high quality chemical for construction solution.

SOSO Chemical has diversified business in the realms of Construction and design's fraternity as there are certain design advantages are derived by them out of our vast product range of Construction Chemicals such as Tiles Adhesive, Tile Grout, Epoxy Grout, Waterproofing, Sealers, Wall Putty, Plaster.

We invent, develop and install specialty construction chemicals to make people's life better by protecting and improving the quality of man-made structures worldwide.

100% High Quality



Packing : 20 Kg. Bag

NSA - COOPER



NSA - COPPER (Grey)

POLYMER MODIFIED CEMENT BASE ADHESIVE

Product Description

FLOOR AND WALL THIN-SET ADHESIVE

NSA copper is a smooth and creamy thin-set adhesive for installing small to medium format ceramic tiles, Vitrified tiles & natural stones wall and floor in interior areas. For improved performance and exterior use, With SOSO LATEX ADDITIVE

Application

Applying ceramic wall tiles on wall internally, applying vitrified tiles on floor (600x600mm, 600x1200mm, 800x800mm & 800x1200mm)
Applying floor tiles on floor (300x300mm, 400x400mm)

Shelf life & Storage :

Shelf life is 12 months from the date of manufacturing in unopened condition. Store in a cool and dry place.

Mixing Ratio:

20kg. Of NSA-COPPER Powder will require approximately 5 Liters to 6 Liters of clean drinking water.

Coverage

Approx. 40-50 sq.ft. per 20kg. bag with (6mm * 6mm) Notch trowel for a bed thickness of 3mm

Note : The coverage will vary depending on surface undulations & size of tiles / stone.

Advantages

- | High-Bond adhesion strength
- | Easy to Apply
- | Dual purpose for floor and wall installation with good adhesion and workability
- | Extended open time
- | Increased Flexibility
- | Self - Curing

Suitable Substrates

- | Concrete wall and floor areas
- | Cement Mortar Beds
- | Cement plaster
- | Brick Masonry
- | Cement Terrazzo

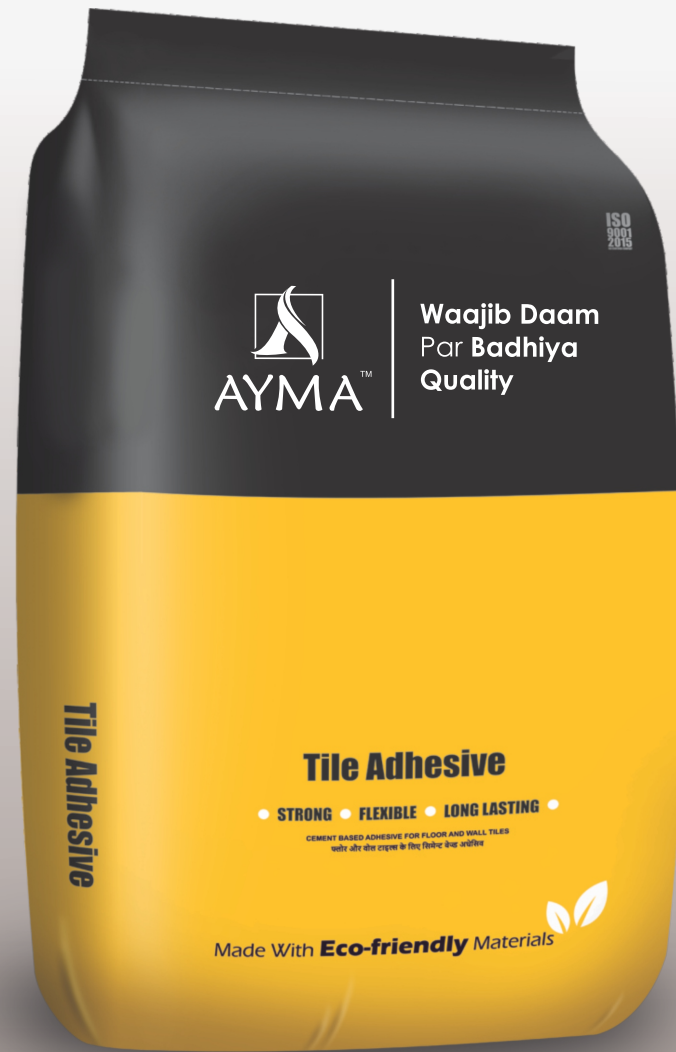
Technical Information :

PROPERTIES	RESULTS
Appearance	: Free Flowing Powder
Colour	: Grey
Pot Life @ 250 c, minutes	: 35 to 45
Open Time, minutes	: >20
Adjustability Time, minutes	: 5
Trafficable Time, hrs.	: 24
Shear Adhesion, M pa	: 8-10
Tensile Adhesion Strength, 14 Days, M pa	: >1275 N force



Waajib Daam
Par Badhiya
Quality

100% High Quality



Packing : 20 Kg. Bag

NSA - GOLD



NSA - GOLD (Grey)

POLYMER MODIFIED CEMENT BASE ADHESIVE

Product Description

NSA – GOLD is a premium quality, polymer modified, and multi-purpose thin-set adhesive for fixing Vitrified tiles, natural stone and marble, glass brick wall, swimming pool tiles, on variety of interior and exterior substrates for wall and floor applications.

For Heavy tiles and stone apply Exterior use, With SOSO LATEX ADDITIVE

Application

Applying Tiles on Tiles, Applying ceramic wall tiles on wall internally, applying vitrified tiles on Wall (600x600mm, 600x1200mm, 800x800mm & 800x1200mm)

Shelf life & Storage :

Shelf life is 12 months from the date of manufacturing in unopened condition. Store in a cool and dry place.

Mixing Ratio: 20kg. Add 5 Ltr. to 6 Ltr. of clean drinking water.

Coverage

Approx. 40-50 sq.ft. per 20kg. bag with (6mm * 6mm)
Notch trowel for a bed thickness of 3mm

Note : The coverage will vary depending on surface undulations & size of tiles / stone.

Advantages

- | Multipurpose Hi - polymer modified thin-set adhesive
- | Hi-bond strength for exterior application of various tiles and Natural stones
- | Highly flexible yet strong on bond strength adhesive
- | Self – curing
- | Economical & Easy to use

Suitable Substrates

- | Cement plaster
- | Brick Masonry
- | Ceramic, Vitrified tiles and stone
- | Cement Terrazzo
- | Gypsum wall board (For Interior)

Technical Information :

PROPERTIES	RESULTS
Appearance	: Free Flowing Powder
Colour	: Grey
Pot Life @ 250 c, minutes	: 35 to 45
Open Time, minutes	: >20
Adjustability Time, minutes	: 5
Trafficable Time, hrs.	: 24
Shear Adhesion, M pa	: 8-10
Tensile Adhesion Strength, >1550 N force 14 Days, M pa	



Waajib Daam
Par Badhiya
Quality

100% High Quality



Packing : 20 Kg. Bag

NSA - DIAMOND



NSA - DIAMOND (White)

POLYMER MODIFIED CEMENT BASE ADHESIVE

Product Description

NSA – GOLD is a premium quality, polymer modified, and multi-purpose thin-set adhesive for fixing Vitrified tiles, natural stone and marble, glass brick wall, swimming pool tiles, on variety of interior and exterior substrates for wall and floor applications.

For Heavy tiles and stone apply Exterior use, With SOSO LATEX ADDITIVE

Application

Applying Tiles on Tiles, Applying ceramic wall tiles on wall internally, applying vitrified tiles on Wall (600x600mm, 600x1200mm, 800x800mm & 800x1200mm) Applying

Shelf life & Storage :

Shelf life is 12 months from the date of manufacturing in unopened condition. Store in a cool and dry place.

Mixing Ratio: 20kg. Add 5 Ltr. to 6 Ltr. of clean drinking water.

Coverage

Approx. 40-50 sq.ft. per 20kg. bag with (6mm * 6mm)
Notch trowel for a bed thickness of 3mm

Note : The coverage will vary depending on surface undulations & size of tiles / stone.

Advantages

- Hi - polymer modified thin-set adhesive
- Hi-bond strength for exterior application of various tiles and Natural stones
- flexible yet strong on bond strength adhesive
- Self – curing
- Economical & Easy to use

Suitable Substrates

- Concrete, concrete mortar beds
- Cement plaster
- Brick Masonry
- Ceramic, Vitrified tiles and stone
- Cement Terrazzo
- Gypsum wall board (For Interior)

Technical Information :

PROPERTIES	RESULTS
Appearance	: Free Flowing Powder
Colour	: White
Pot Life @ 250 c, minutes	: 35 to 45
Open Time, minutes	: >20
Adjustability Time, minutes	: 5
Trafficable Time, hrs.	: 24
Shear Adhesion, M pa	: 8-10
Tensile Adhesion Strength, : >1680 N force 14 Days, M pa	



Waajib Daam
Par Badhiya
Quality

100% High Quality



Packing : 20 Kg. Bag

NSA - PLATINUM



NSA - PLATINUM (White)

POLYMER MODIFIED CEMENT BASE ADHESIVE

Product Description

NSA – PLATINUM is a premium quality, polymer modified, and multi-purpose thin-set adhesive for fixing glass mosaic, glass brick wall, and swimming pool tiles, marble and natural stones on variety of interior and exterior substrates for wall and floor applications.

For Heavy tiles and stone apply Exterior use, With SOSO LATEX ADDITIVE

Application

Applying vitrified slabs Wall externally (1000x1000mm, 120x2400mm, 750x1500mm)
Applying vitrified tiles on wall externally (600x600mm, 600x1200mm, 800x800mm & 800x1200mm)
Applying natural stone, marble, granites on wall.

Shelf life & Storage :

Shelf life is 12 months from the date of manufacturing in unopened condition. Store in a cool and dry place.

Mixing Ratio: 20kg. Add 5 Ltr. to 6 Ltr. of clean drinking water.

Coverage

Approx. 40-50 sq.ft. per 20kg. bag with (6mm * 6mm) Notch trowel for a bed thickness of 3mm

Note : The coverage will vary depending on surface undulations & size of tiles / stone.

Advantages

- Hi - polymer modified thin-set adhesive
- Hi-bond strength for exterior application of various tiles and Natural stones
- flexible yet strong on bond strength adhesive
- Self – curing
- Economical & Easy to use

Suitable Substrates

- Concrete mortar beds
- Cement plaster
- Brick Masonry
- Ceramic, Vitrified tiles and stone
- Cement Terrazzo
- Gypsum wall board (For Interior)

Technical Information :

PROPERTIES	RESULTS
Appearance	: Free Flowing Powder
Colour	: White
Pot Life @ 250 c, minutes	: 35 to 45
Open Time, minutes	: >20
Adjustability Time, minutes	: 5
Trafficable Time, hrs.	: 24
Shear Adhesion, M pa	: 8-10
Tensile Adhesion Strength, : >2250 N force 14 Days, M pa	



Waajib Daam
Par Badhiya
Quality

100% High Quality



Packing : 1 Kg.

TILE GROUT



TILE GROUT (One Pack)

POLYMER MODIFIED CEMENT BASE GROUT

Product Description

SOSO TILE GROUT is a superior quality and higher polymer modified cementitious tile grout used for interior and exterior application. It is suitable for grouting ceramic tiles, vitrified tiles, marbles, Pavers and natural stone in wall and floor areas. For better performance it is recommended to use tile grout with SOSO LATEX ADDITIVE Mixture.

Application

Used for filling tile grouting 1mm to 4mm in both interior and exterior areas.(Kitchens, Bathrooms, Balconies, Terraces, Swimming-pools, Showrooms....etc.)

Mixing Ratio:

Use approx. 300ml to 400ml of water or Latex Additive mixture for 1 kg. of Tile grout.

Coverage : Varies with tile size and grout width.

Shelf life & Storage :

Shelf life is 12 months from the date of manufacturing in unopened condition. Store in a cool and dry place.

Available Shade:



Special Colours



Advantages

- | Colour – fast
- | Easy to mix, Apply and Clean up
- | Smooth & glossy finish
- | Water resistant formation
- | Mold resistance
- | Non-cracking

Methods & Site conditions

Cleaning

- | Clean and remove any loose particles.
- | Make sure that the tiles joints are clean and saturated and excess water is removed from joints before grouting.

Technical Information :

PROPERTIES	RESULTS
Pot Life @ 30 c, minutes	: 60
Open Time, minutes 30	: 30
Adjustability Time, minutes	: 15 to 20
Initial set @ R T, hours	: 2
Final set @ R T, hours	: 8
Shrinkage%	: <0.1
# Water Absorption, %	: 8.3



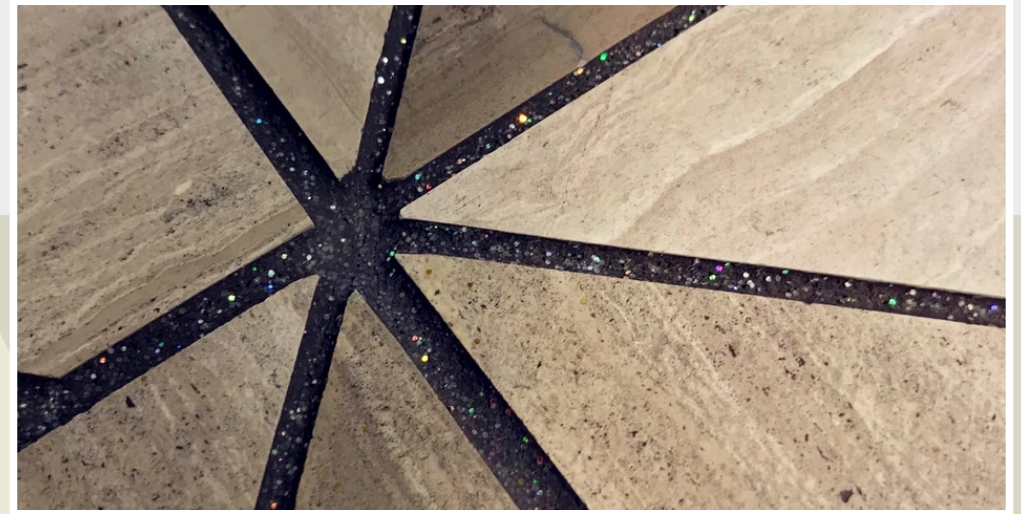
Waajib Daam
Par Badhiya
Quality

100% High Quality



Packing : 1 Kg. & 5 Kg.

EPOXY GROUT



EPOXY GROUT (3 Part)

HIGH PERFORMANCE EPOXY GROUT

Product Description

SOSO Epoxy Grout is specifically designed for use in application of ceramic tiles, vitrified tiles, marble, glass mosaic tiles, and stone where staining is expected

36 Shade Available in Different Color.

33 Shade Available in Glitter

(11-Gold, 11-Silver, 11-Copper = 33)

Coverage : Varies with tile size and grout width.

Unit consisting of three conveniently packed components - Resin & Hardener (Part A & Part B) and coloured filler Powder (Part C).

Kit	Filler	Resin	Hardener
5 kg	3.5 kg	1 kg	500gm
1 kg	700gm	200gm	100gm

Application

- | Kitchens
- | Bathrooms
- | Swimming Pools
- | Hospitals / Laboratories
- | Spa & Sauna
- | Water bodies
- | Industrial Application

Advantages

- | Easy to apply and clean
- | Colour - fast & 100% Stainfree
- | Acid / Chemical Resistant
- | Non - Cracking or Powdering
- | Anti - Fungal & Anti - Bacterial
- | Available in Range of attractive Colors

Technical Information :

PROPERTIES	RESULTS
Shear Adhesion Strength	: >2N/m ²
Abrasion Resistance	: =250mm ³
Mechanical Flexural Strength	: =30N/mm ²
Compressive Strength	: =45N/mm ²
# Water Absorption, %	: Nil(1)
Tensile Adhesion (14 day air)	
Epoxy Grout	: >4.5 Dry Condition(kN)
Epoxy Grout	: >3.6 Wet Condition(kN)

100% High Quality



Packing :
500 ml., 1 Ltr. & 5 Ltr.

SBR - LATEX



SBR LATEX

FOR REPAIRS AND WATERPROOFING

Product Description

SOSO SBR LATEX is based on modified styrene butadiene latex supplied as a ready to use bonding agent in liquid consistency. It is used for repair of spalled concrete – floors, columns, beams, chhajas, slabs & waterproofing of toilets & bathrooms, small terraces etc. as it bonds strongly to old & new concrete and to plasters. It reduces shrinkage, prevents cracking, dust pick up & improves abrasion resistance.

Areas of Application

- For concrete repairs: Spalled concrete of floors, columns, beams, chajja, slabs, parapets, etc.
- For waterproofing: Small roof terraces, sunken portions of toilets & bathrooms, chajja & lift pits, balconies
- As a bond coat: For bonding of new concrete to old concrete, masonry stone work, plastering.
- For cladding: Fixing or re-fixing of slip bricks, tiles, stones & marble bedding.
- As external rendering: Weatherproof & frost resistant render
- As bonding slurry coat: For pinhole treatment on concrete surface

Coverage :

As a waterproofing coating 22 – 25 sq.ft./kg in 2 coats
As a mortar modifier 6-7.5 kg of SOSO SBR LATEX per 50 kg of cement
As a bonding agent 45 – 50 sq.ft./kg per coat

Technical Information :

PROPERTIES	RESULTS
Type	Styrene Butadiene Polymer Liquid
Colour	White
Specific Gravity	1.02±0.02
Storage Condition	Free From Frost
Solid Content	44±1%
Hard Dry	5 to 6 Hours
For Best Result	Use Before 1 Year if Unopened
Proportion Mix 1:4:7	SBR Latex:Water:Cement



Wajib Daam
Par Badhiya
Quality

100% High Quality



Packing : 200 ml.

GROUT ADMIXTURE



GROUT ADMIXTURE

Latex Admix

Product Description

Grout Admixture is specially designed Latex Admix to be used with Sanded & Unsanded Grout.

Applications

It improves the performance of portland cement grouts for all type of ceramic tile, bricks, marble, natural stone and agglomerate stone

Coverage :

Varies by applications

Advantages

- | Colour-fastness
- | Flexibility
- | Compressive Strength
- | Shock and Chemicals Resistance
- | Reduces water absorption
- | Easy to clean

Technical Information :

PROPERTIES	RESULTS
Physical Appearance	: White Liquid
Specific Gravity	: 0.955
Solid Content	: 20.5%
Odour	: Medium



Waajib Daam
Par Badhiya
Quality

100% High Quality



Packing :
500 ml., 1 Ltr. & 5 Ltr.

TILE CLEANER



TILE CLEANER

GENERAL PURPOSE TILE CLEANER

Applications

A Powerful, Heavy duty, Acid-based cleaner for ceramic and vitrified tiles - wall and floor. The cleaner can be used as general purpose cleaner on other acid resistant surface.

Coverage :

Coverage depends on the porosity of the surface, stains, dilution etc.

NOTE :

Do not use on surface that are not resistant to acid such as natural stones, terrazzo and CP fittings.

Application

- | Interior & Exterior
- | Wall & Floor

Advantages

- | Powerful formula
- | Fast acting
- | Easy to apply
- | Removes Cement film
- | Ideal for interior & exterior areas



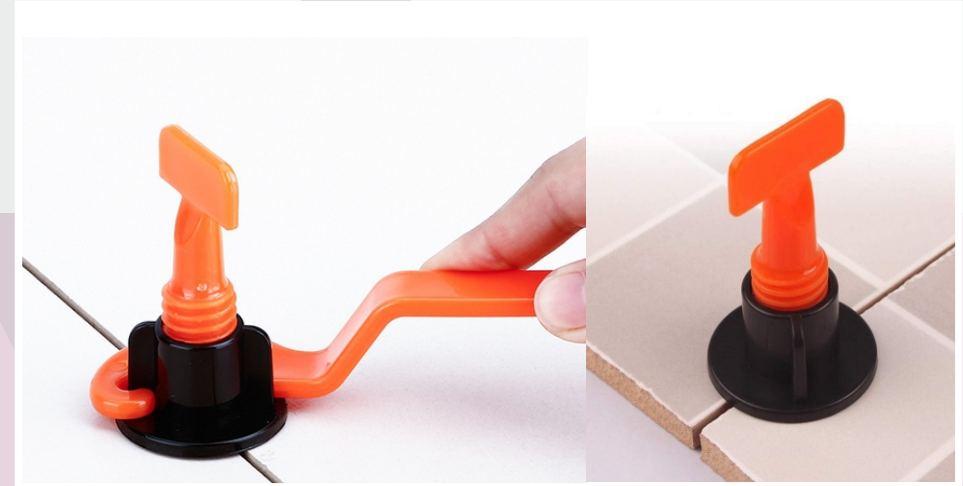
Waajib Daam
Par Badhiya
Quality

100% High Quality



Packing :
50 Pcs. + 1 Tools

TILES EQUALIZER



TILES EQUALIZER (Reusable)

Tiles Leveling and Equalizing Surface

Applications

- | Walls
- | Floors
- | Interiors
- | Exteriors
- | Dry & Wet Areas
- | Showers
- | Swimming pools

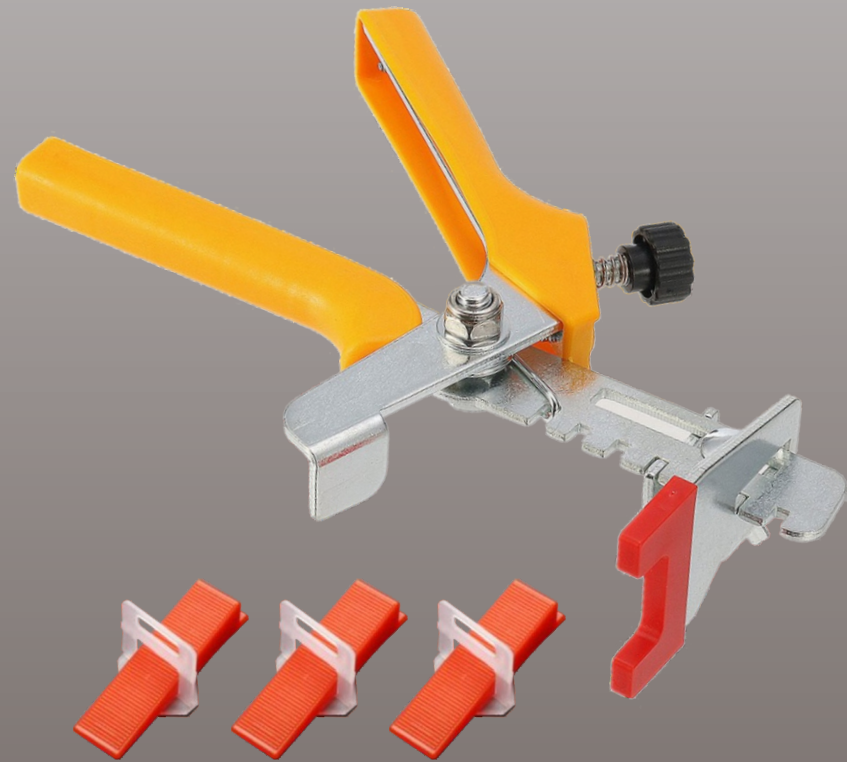
Demand Quantity (Clip/m²)

Size/Area	1 ² m	2 ² m	5 ² m	10 ² m	20 ² m	50 ² m
30x30 cm	12	24	60	120	240	600
40x40 cm	25	50	125	250	500	1250
50x50 cm	15	30	75	150	300	750
30x60 cm	18	36	90	180	360	900
60x60 cm	12	20	50	100	200	500
80x80 cm	10	20	45	80	140	360

Advantages

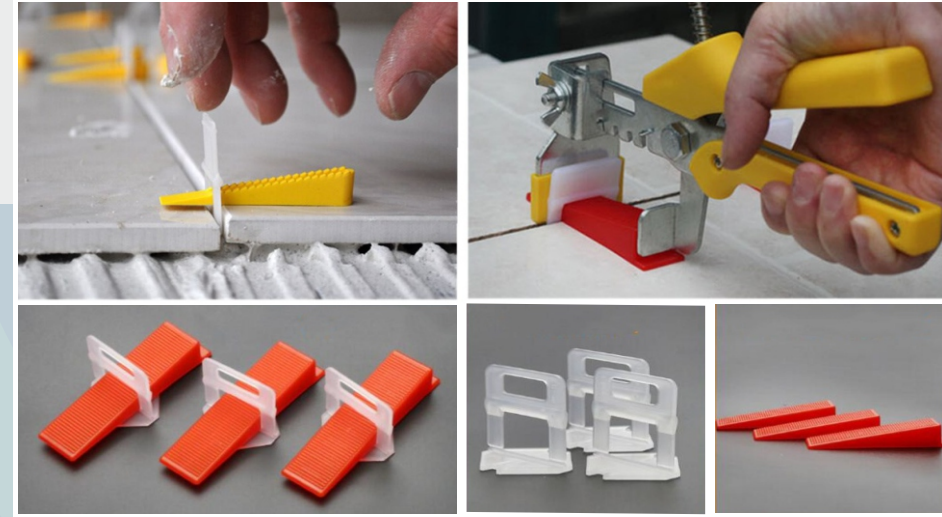
- | Specifically angled pliers for use on floor
- | Sturdy steel construction with adjustable tension
- | Tiles are pushed, not lifted, providing better tile adhesion
- | Improves speed of tile laying
- | The most economical tile leveling system
- | The equalizer are reusable dozens of times

100% High Quality



Packing :
50 (Clips) + 50 (Wedge)

TILES EQUALIZER



TILES EQUALIZER

Tiles Leveling and Equalizing Surface

Product Details:

Leveling system is an innovative product that will greatly assist most anyone in the installation of stone, ceramic, marble, granite and large format slab tiles. It is designed to create virtual lippage free installation when used on floor or wall. The system interlocks the tiles, virtually creating single flat slab surface while the setting material is curing.

The interlocking design of the system reduces and in most cases eliminates settling from shrinkage, as well as minimizing the possibility of warping. The system reduces the need to re-lift tiles to add more mud and or the process of shimming tiles, thus greatly increasing the speed of installation, all the while creating that much desired lippage free mirror surface. In addition, the caps are reusable dozens of times.

Demand Quantity (Clip/m²)

Size/Area	1 ² m	2 ² m	5 ² m	10 ² m	20 ² m	50 ² m
30x30 cm	12	24	60	120	240	600
40x40 cm	25	50	125	250	500	1250
50x50 cm	15	30	75	150	300	750
30x60 cm	18	36	90	180	360	900
60x60 cm	12	20	50	100	200	500
80x80 cm	10	20	45	80	140	360

Advantages

- | Specially angled pliers for use on floor
- | Sturdy steel construction with adjustable tension
- | Tiles are pushed, not lifted, providing better tile adhesion
- | Improves speed of tile laying
- | The most economical tile leveling system

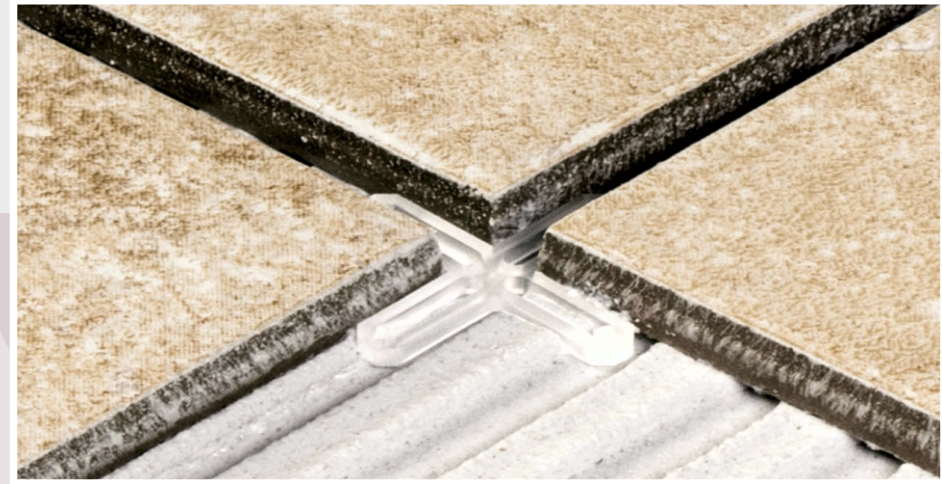
100% High Quality



Packing : 100 pcs. per packet

Size : 2mm, 3mm, 4mm, 5mm, 6mm, 8mm, 10mm

TILES SPACER



TILES SPACER

For Consistent and Even Spacing of Tiles

Product Description

At the most basic level, spacers have a pretty simple purpose: they will allow you to keep the tiles at equal distance, enabling you to space them correctly and get a symmetrical result.

However, their benefits don't stop here. Here's how spacers can make your life easier and ensure that the installation process goes a bit smoother than before.

Method of Application

If you plan to undertake tile installation at home, be sure to obtain some tile spacer for your project. Spacers are small cross-like or t-shaped pieces of plastic, ceramic or wood which help you to space your tiles apart in equal distances. They come in various sizes, although most commonly used spacers range in with from 1/4 to 3/8 of an inch.

To use spacers, you need to lay 4 tiles at a time on the work surface. you place the spacers at the corners of each tile and then push the tiles together until they can go no further. Once you complete your tile installation, you can remove the spacer and save them for future project. Spacer can help you to accomplish a well installed and attractive tile arrangement on floor walls or countertops in your home.

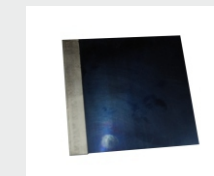
Accessories :



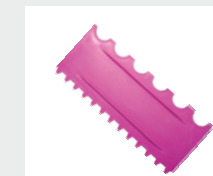
Sponge



Scubber



Putty Blade



Notch Trowel



Notch Trowel Heavy

How To Apply?

Method of Installation : Tiles & Stone Adhesive

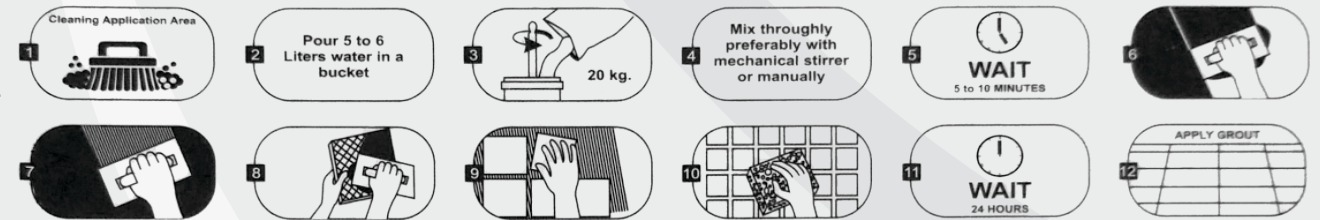
Mixing Ration

- | 20kg. of Adhesive Powder will required approximately 5 Ltr. to 6 Ltr. of clean drinking water.
- | Slowly and adhesive powder into a clean bucket with the measure water.
- | Slowly mix with a drill & quality mixing paddle to ensure a smooth lump free tooth paste consistency.
- | Leave the mix for 5 to 10 min. then re-stir. The adhesive is now ready for use.

Cleaning

- | Clean tools and tile work with water while adhesive is fresh.

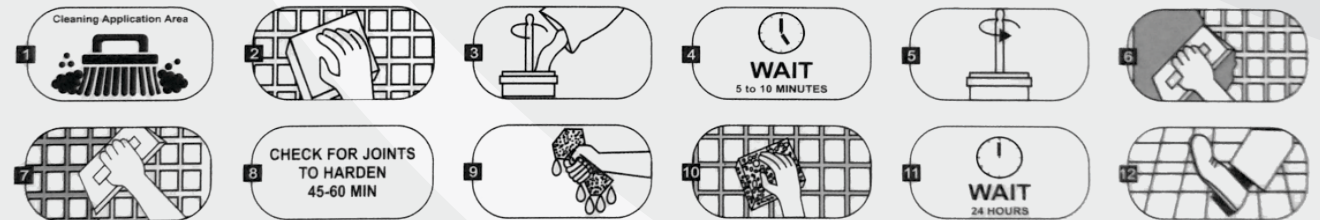
* The powder - Liquid ratio may vary according to job conditions.



Method of Installation : Tiles Grout

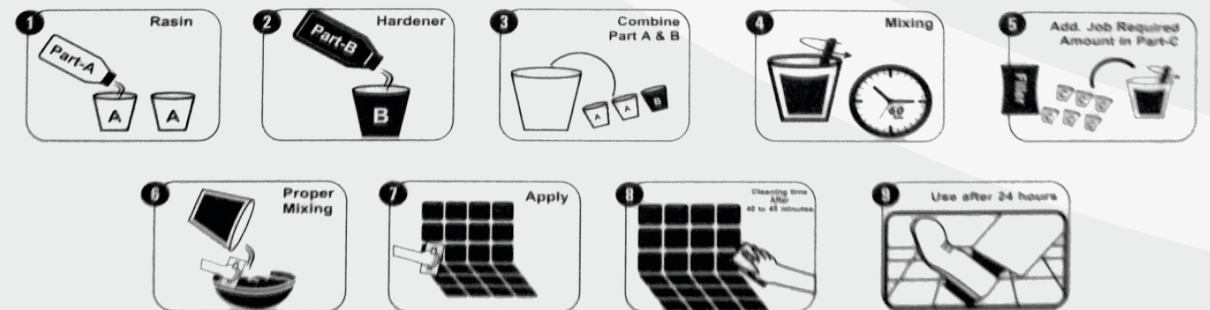
Cleaning

- | Clean and remove any loose particles
- | Make sure that the tiles joints are clean and saturated and excess water is removed from joints before grouting.



Method of Installation : Premium Epoxy Grout

- | All Surface must be clean & remove any excess particles
- | Do not mix with other chemicals
- | Clean the tile surface with water & soap solution after 12-24 hours of grouting to remove epoxy haze.





**Waajib Daam
Par Badhiya
Quality**

Manufactured And Marketed By: